

Chapter 5

Disassembly Guide

Table

CHAPTER 5 DISASSEMBLY GUIDE..... I

5. Disassembling the Base Unit 3

5.1 Removing the Battery Pack 4

5.2 Removing the HDD Module 4

5.3 Removing the DDR RAM 7

5.4 Disassembling the ODD (CD-ROM/DVD-ROM/CD-RW...) 9

5.5 Removing the Keyboard..... 11

5.6 Removing the Switch Board..... 13

5.7 Removing the Wireless LAN Card..... 14

5.8 Removing the System Fan..... 17

5.9 Removing the Thermal Module..... 18

5.10 Removing the CPU..... 19

5.11 Removing the Bluetooth Module 20

5.12 Removing the Robson Card..... 21

5.13 Removing the LCD Module 22

5.14 Disassembling the Display and the Inverter Board 24

5.15 Removing the Camera Module..... 28

5.16 Removing the Logic Upper 29

5.17 Removing the LED Board 31

5.18 Removing the Motherboard..... 32

5.19 Removing the Modem Card 34

5.20 Removing the VGA Board 35

5.21 Removing the Audio Board..... 37

5.22 Removing the USB Board..... 38

5.23 Removing the RJ11 Port..... 38

5.24 Removing the Touch Pad Button Board and Touch Pad..... 39

5.25 Removing the Fingerprinter Module 42

5.26 Removing the Power USB Board..... 43

1. Disassembling the Base Unit

These are the directions for disassembling the base unit. You will need a 5.5mm Nut Driver, a medium size Philips screwdriver.

These directions are to disassemble the complete unit and are cross-referenced to Chapter 7 for the replacement of component parts.

Before disassembly, make sure the notebook is powered off.

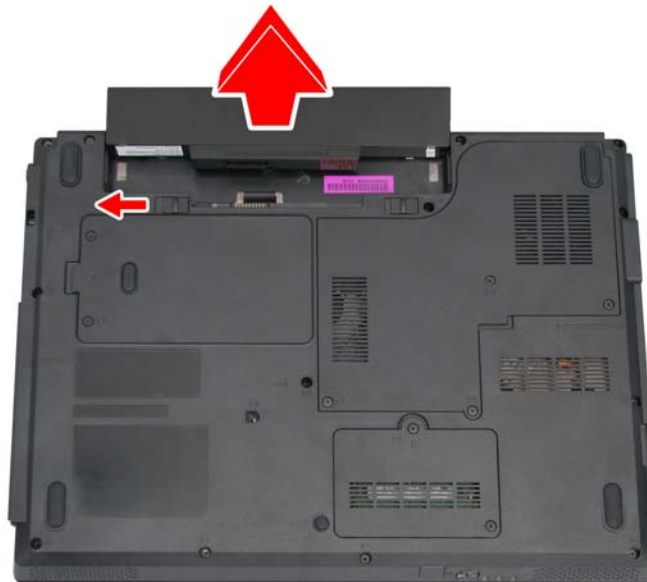
1.1 Removing the Battery Pack

To remove the battery pack from the battery bay, follow the steps below:

1. Turn the notebook upside down.
2. Slide the right battery release lock in the direction of the arrow to unlock the battery pack.



3. Slide the left battery release latch in the direction of the arrow. The battery pack will pop-up automatically. Gently pry the battery pack from its housing.



NOTE: Always start laptop disassembly by removing the battery pack first.

1.2 Removing the HDD Module

Follow the steps below to remove the HDD module:

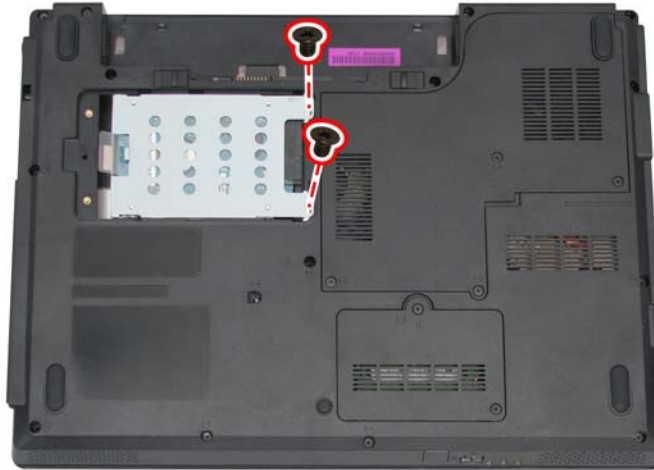
1. Turn the notebook upside down.
2. Remove the two M2.5x4 screws securing the HDD compartment cover.



3. Pull up the HDD compartment cover in the direction of the arrow.



4. Remove the two M2.5x4 screws securing the HDD module in place.



5. Pull the tab to remove the HDD module in the direction of the arrow.



6. Remove the four silver M3x3 screws to take off the HDD case.



7. Remove the HDD module from the HDD case.

1.3 Removing the DDR RAM

Follow the steps below to remove the DDR RAM:

1. Turn the notebook upside down.
2. Remove one M2.5x4 screw and one M2.5x18 screw securing the RAM cover, and then remove the cover.



3. Push the latches to release the RAM module. A spring will force one end of the module up.



4. Grasp the module and pull it out.



1.4 Disassembling the ODD (CD-ROM/DVD-ROM/CD-RW...)

Follow the steps below to disassemble the optical drive (ODD):

1. Turn the notebook upside down.
2. Remove the M2.5x10 screw securing the ODD.



3. Insert a flat screwdriver into the slot as shown and gently push out the ODD.



4. Remove the two M2x3 screws from the bracket plate, and then remove the bracket plate.



1.5 Removing the Keyboard

Open the display panel and follow the steps below to remove the keyboard.

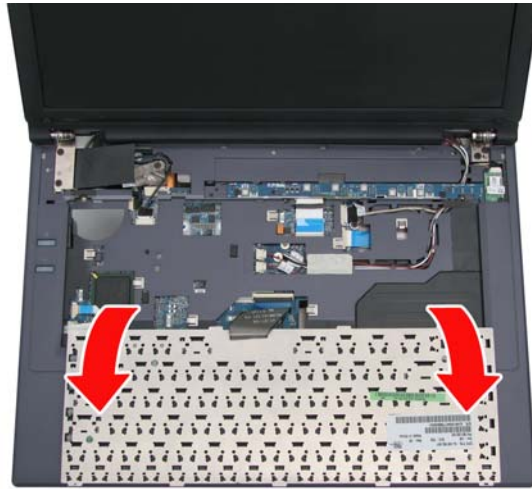
1. Lift up the strip cover from the right side and remove it.



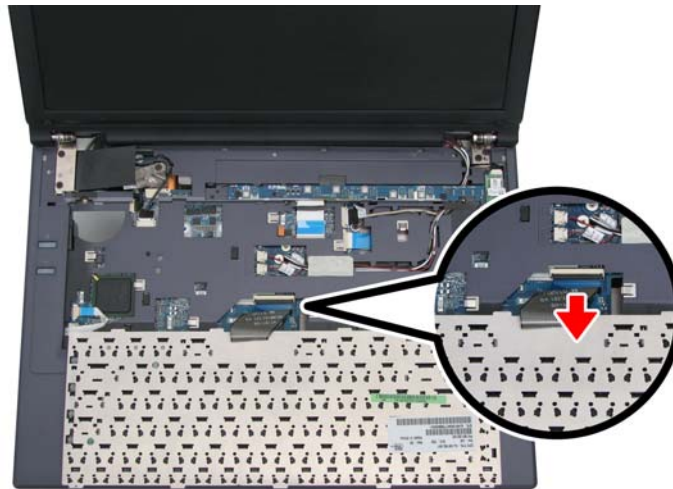
2. Remove the two M2.5x4 screws securing the keyboard.



3. Turn over the keyboard, revealing the keyboard cable underneath.



4. Use a thin tool such as a screwdriver to lever up the connector bracket and disconnect the keyboard cable from the motherboard.



5. Lift and remove the keyboard.

1.6 Removing the Switch Board

Open the display panel and follow the steps below to remove the switch board.

1. Remove the two M2.5x4 screws securing the switch board.



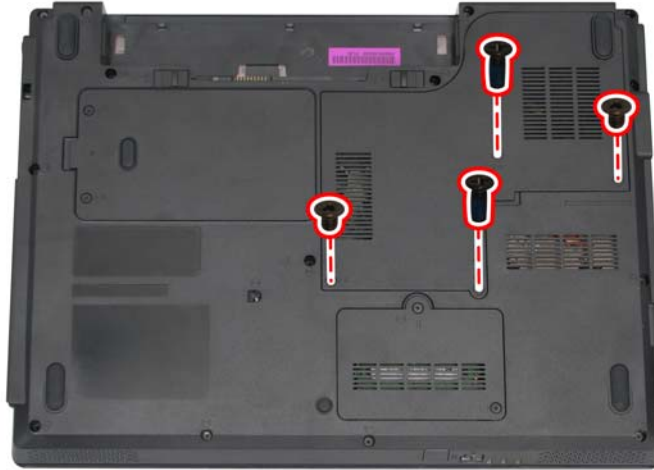
2. Remove the switch board.



1.7 Removing the Wireless LAN Card

To remove the wireless LAN card, follow the steps below:

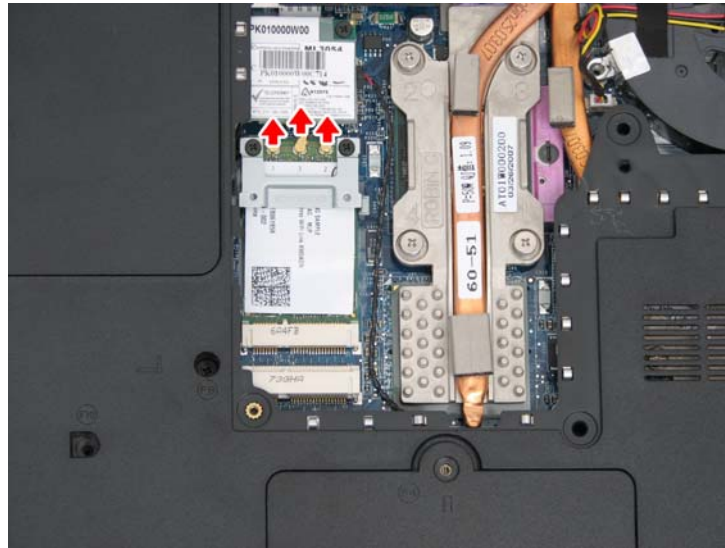
1. Turn the notebook over. Remove the two M2.5x4 and two M2.5x18 screws securing the thermal cover.



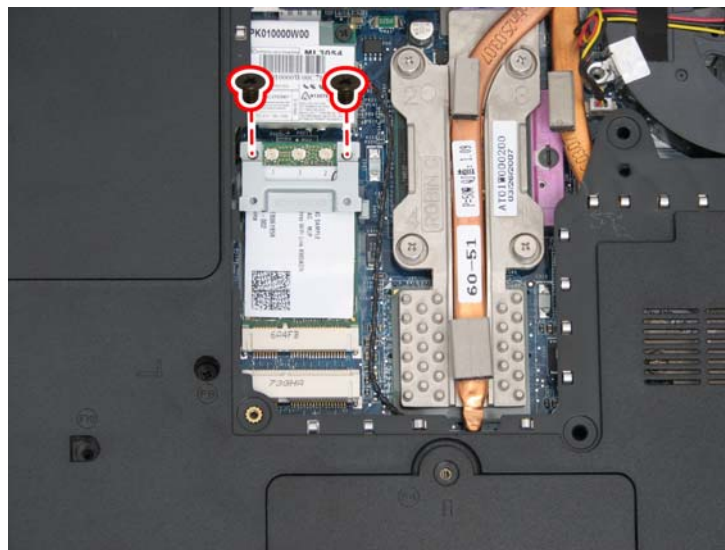
2. Remove the cover.



3. Disconnect the three antennas from the wireless LAN card.



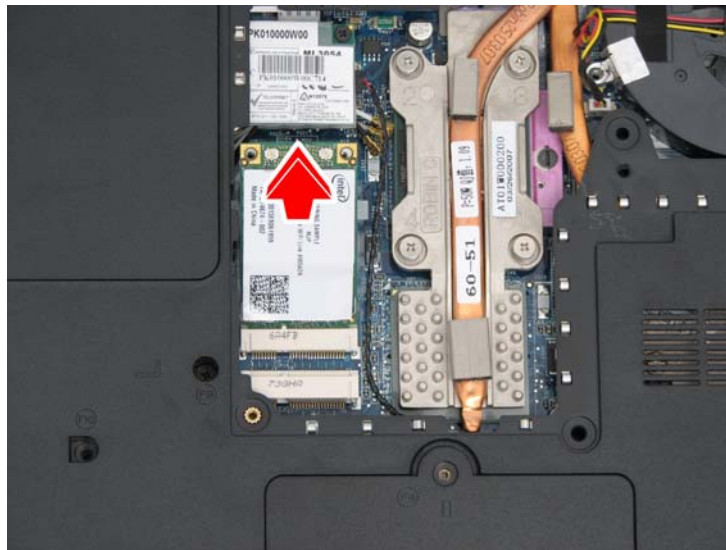
4. Remove the two M2x3 screws attaching the stand-off bracket to the motherboard.



5. Remove the stand-off bracket.



6. Grasp the wireless LAN card and pull it out.

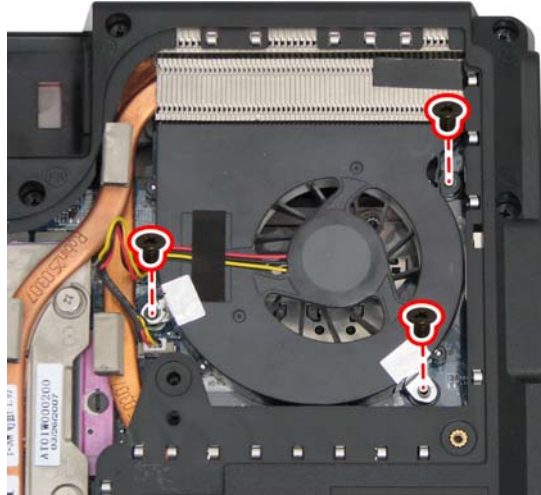


CAUTION: Do not touch the connectors on the wireless LAN card or on the computer. Debris on the connectors may cause the unit to malfunction.

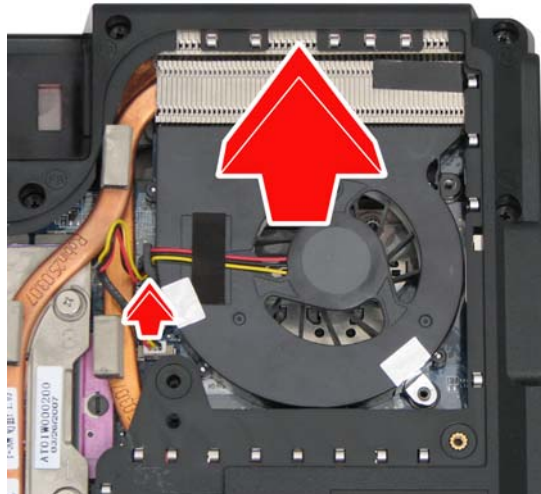
1.8 Removing the System Fan

To remove the system fan, first remove the wireless LAN card. Then follow the steps below:

1. Turn the notebook over. Remove the three M2.5x4 screws securing the system fan.



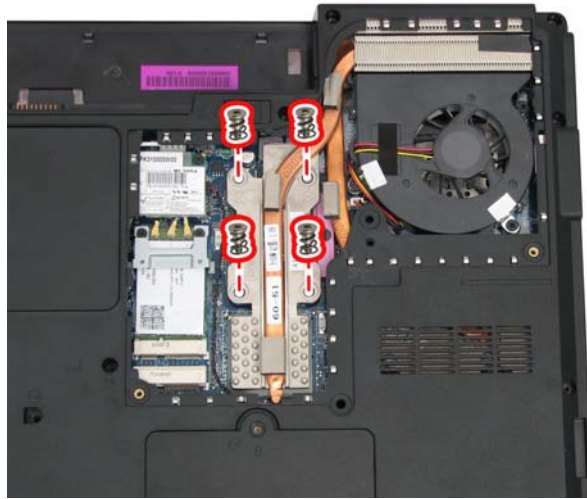
2. Disconnect the fan connector from the motherboard as shown, and lift out the system fan.



1.9 Removing the Thermal Module

To remove the thermal module, first remove the wireless LAN card. Then follow the steps below:

1. Turn the notebook over. Remove the four spring screws securing the thermal module to the motherboard.



2. Lift and remove the thermal module from the motherboard.

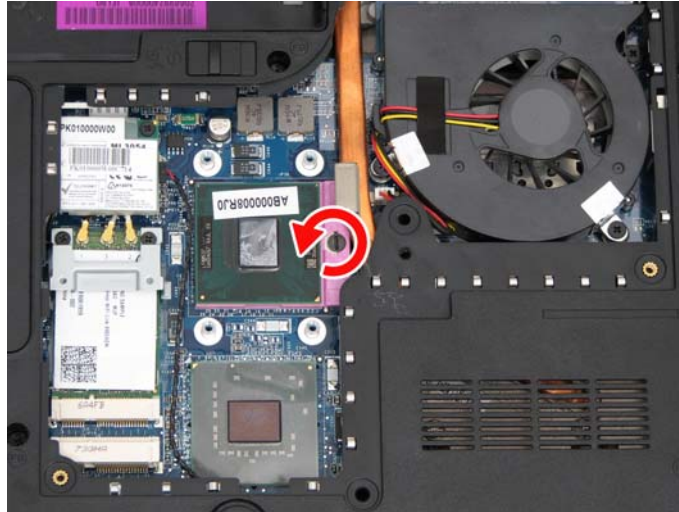


CAUTION: When you remove the thermal module, use the CPU grease tool to remove the grease on the CPU and thermal module. Reapply fresh grease before reinstalling the thermal module.

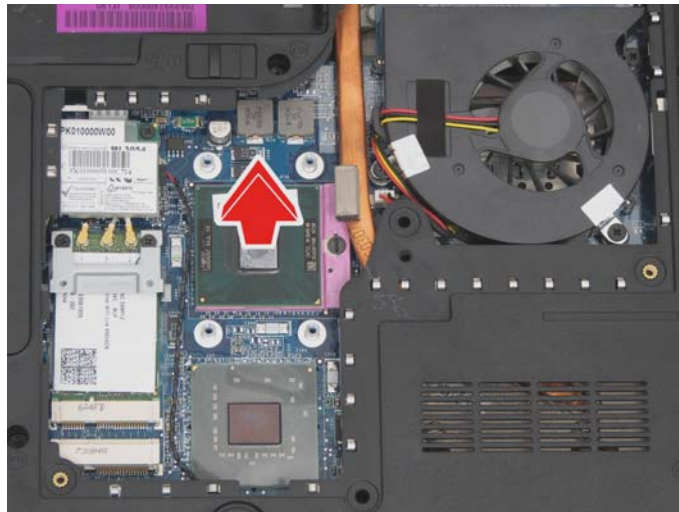
1.10 Removing the CPU

To remove the CPU, first remove the wireless LAN card, and thermal module. Then follow the steps below:

1. Turn the cam on the CPU socket with a flat-blade screwdriver so that the notch on the cam is aligned with the *open* side of the CPU socket to unlock the CPU.



2. Gently lift out the CPU.



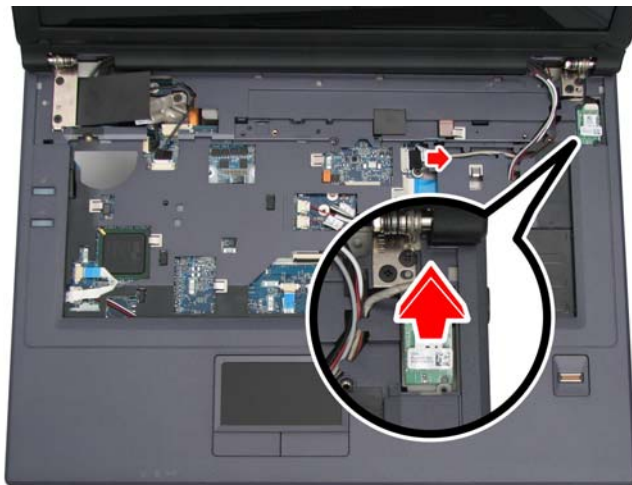
1.11 Removing the Bluetooth Module

To remove the Bluetooth module, first remove the keyboard, and switch board. Then follow the steps below:

1. Remove the two M2x3 screws securing the Bluetooth module to the logic lower.



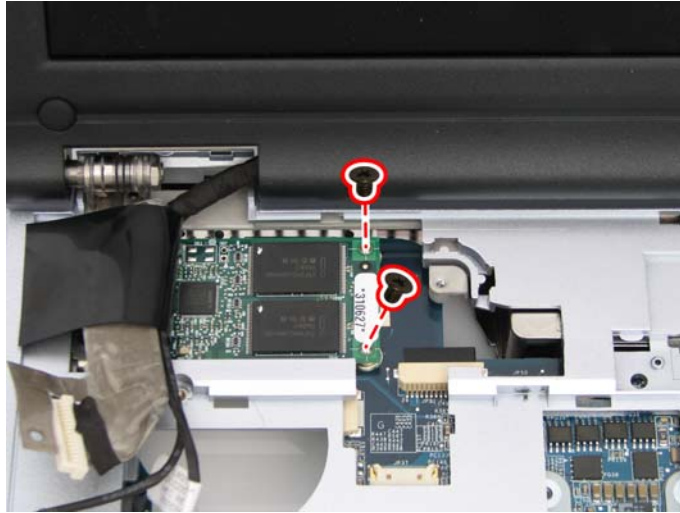
2. Disconnect the Bluetooth cable, and remove the Bluetooth module.



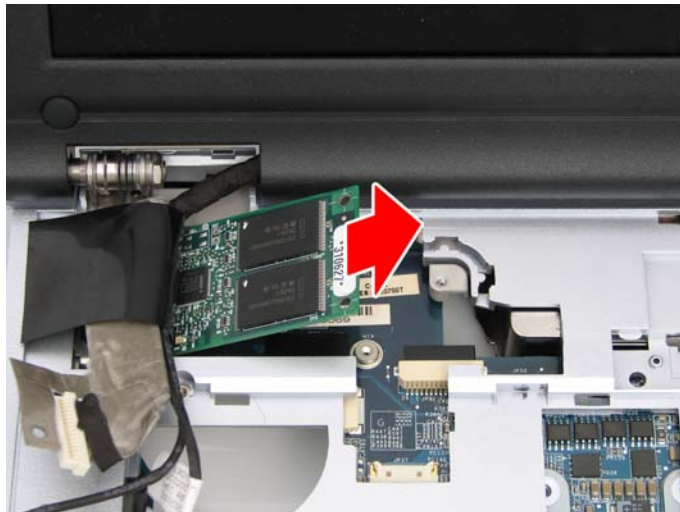
1.12 Removing the Robson Card

To remove the Robson card, first remove the keyboard, and switch board. Then follow the steps below:

1. Remove the two M2x3 screws securing the Robson card to the logic lower..



2. Remove the Robson card.



1.13 Removing the LCD Module

To remove the LCD module, first remove the keyboard, and switch board. Then follow the steps below:

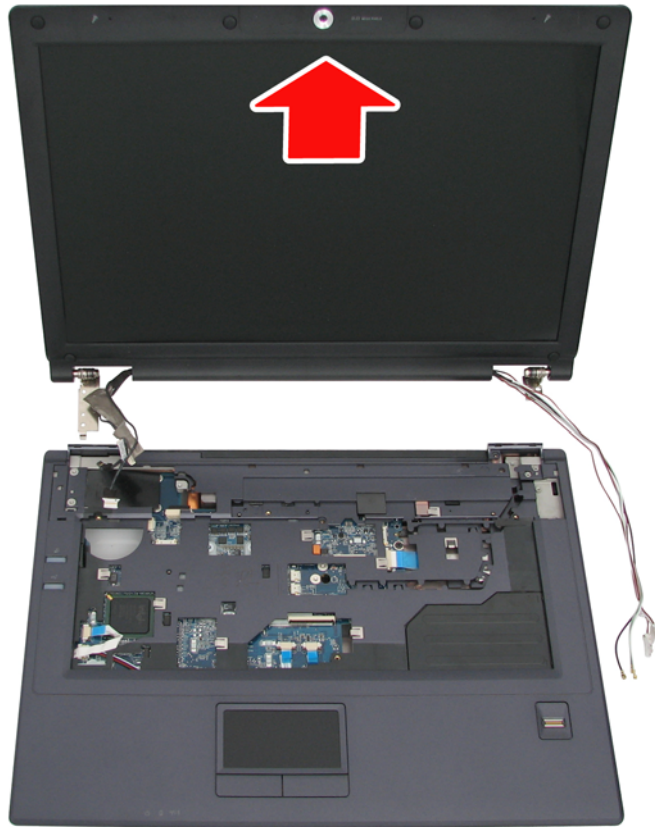
1. Disconnect the LCD power (LVDS), CMOS, and microphone cables and pull the wireless antennas free from the laptop as shown.



2. Remove the four M2.5x4 screws securing the LCD module to the logic upper.



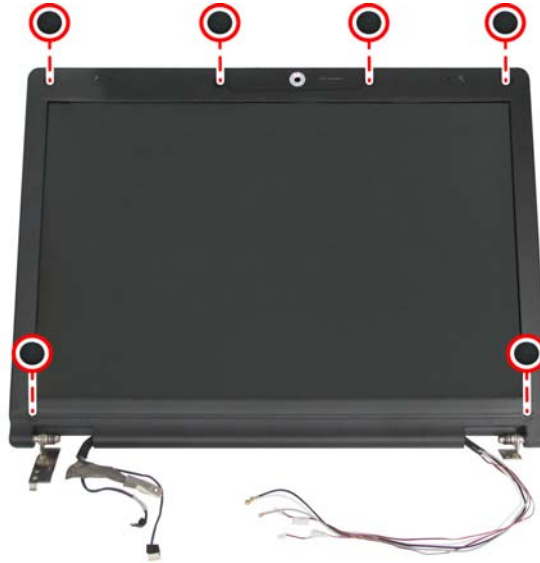
3. Remove the LCD module.



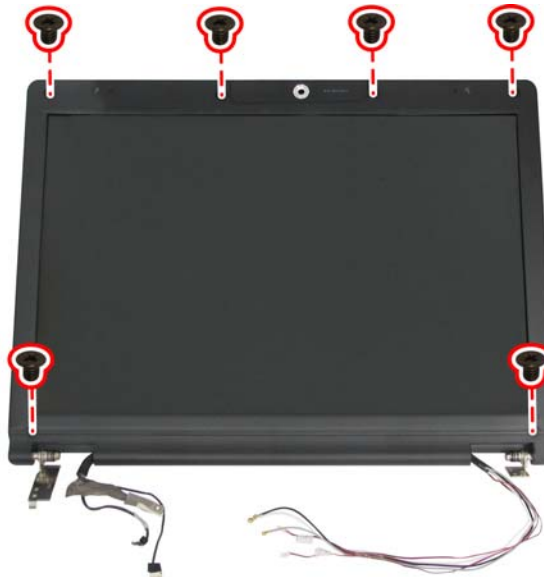
1.14 Disassembling the Display and the Inverter Board

To disassemble the display and inverter board, first remove the keyboard, and switch board. Then follow these steps:

1. Remove the six screw pads as shown.



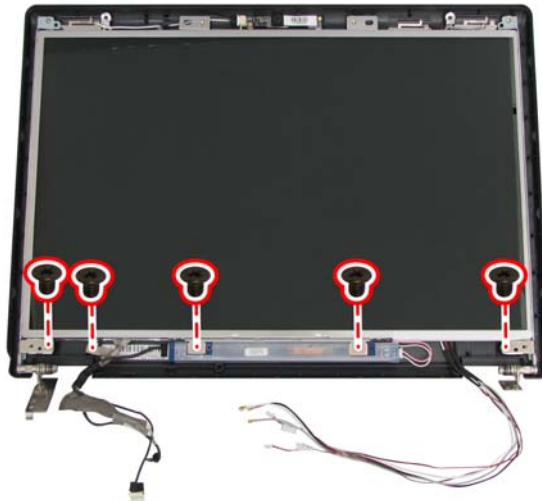
2. Remove the six M2.5x6 screws securing the LCD bezel to the LCD module.



3. Carefully insert your fingers between the display and the LCD bezel as indicated by the arrow, and gently pry up the LCD bezel.



4. Remove the five screws mounting the display, inverter board, and LVDS/CMOS cable to the LCD cover.
 - Two M2.5x6 screws on the display.
 - Two M2.5x4 screws on the inverter board.
 - One M2.5x4 screw on the LVDS/CMOS cable.



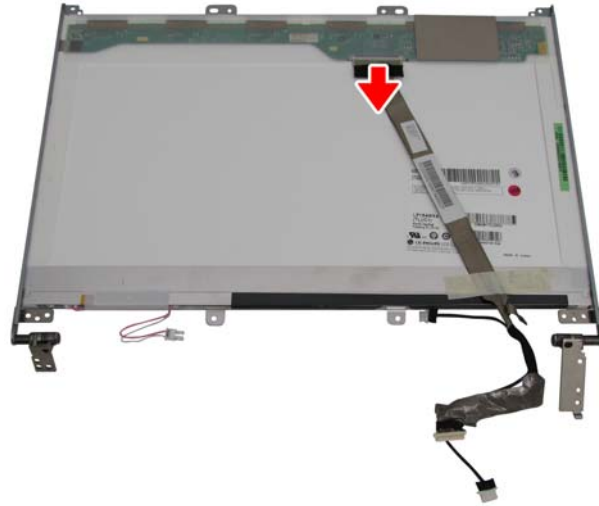
5. Disconnect the two connectors on either side of the inverter board. Remove the inverter board.



6. Gently lift out the display. Remove the eight M2x3 screws securing the hinges to the display.



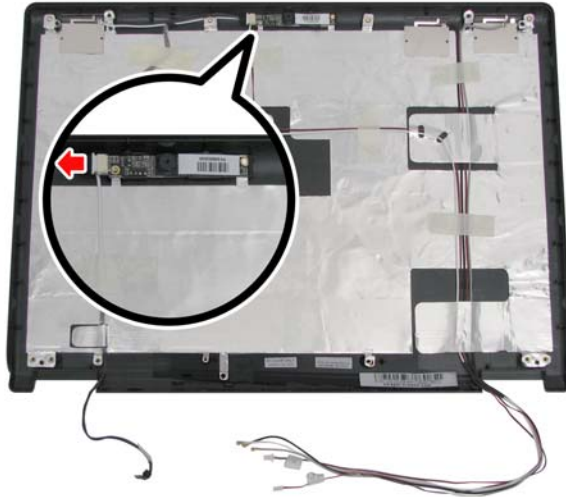
7. Detach the LVDS cable from the back of the LCD panel.



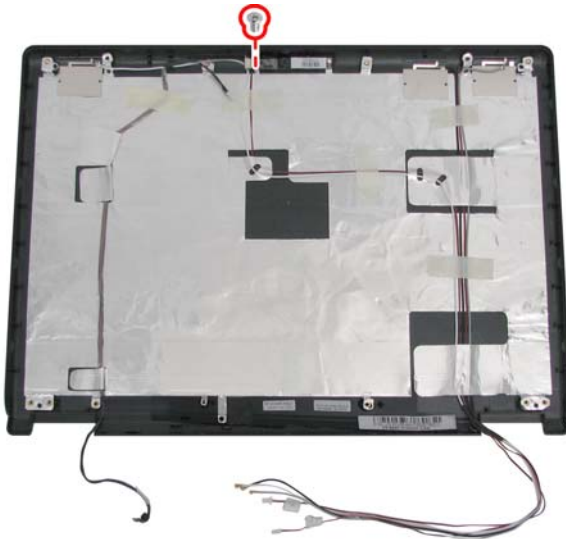
1.15 Removing the Camera Module

To remove the camera module, first remove the keyboard, switch board, LCD module, LCD display, and inverter board. Then follow these steps:

1. Disconnect the CMOS cable from the camera module.



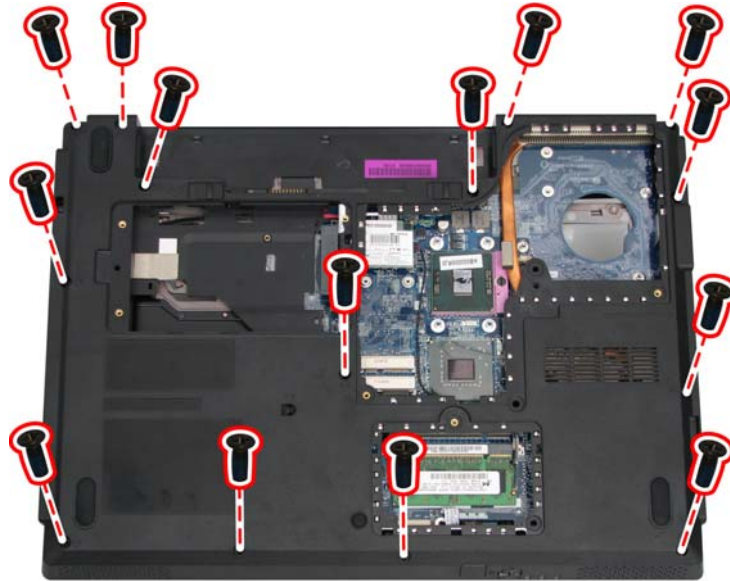
2. Remove the M2x3 screw securing the camera module to the LCD cover. Remove the camera module.



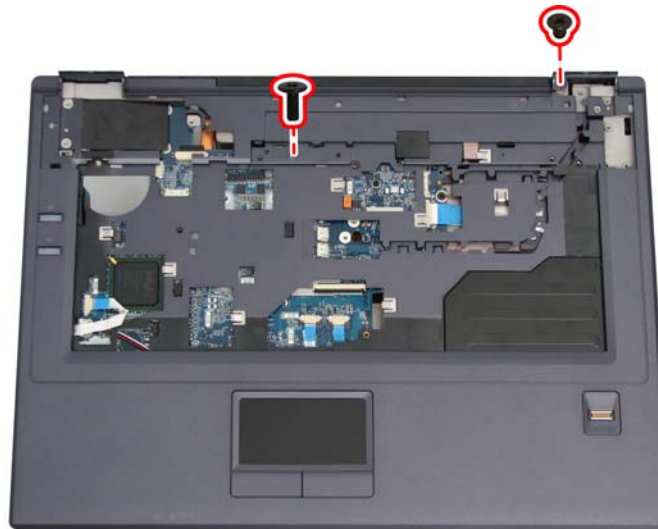
1.16 Removing the Logic Upper

To remove the logic upper, first remove the battery pack, HDD, memory module, ODD, keyboard, switch board, wireless LAN, system fan, thermal module, CPU, Bluetooth module, and LCD module as described in the preceding sections. Follow the steps below to remove the logic upper.

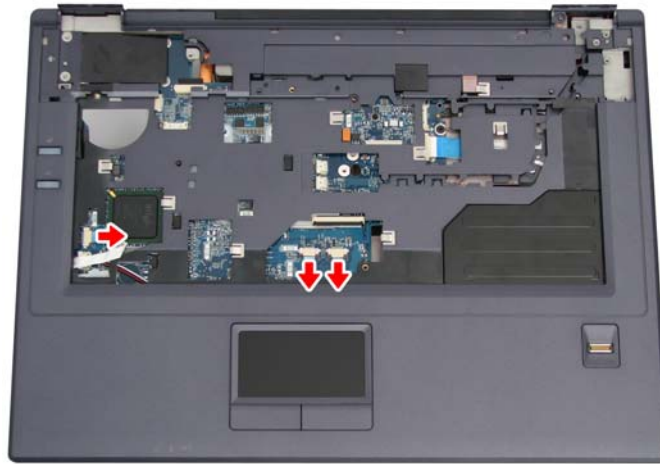
1. Turn the computer upside down and remove the 14 M2.5x8 screws from the bottom side of the notebook.



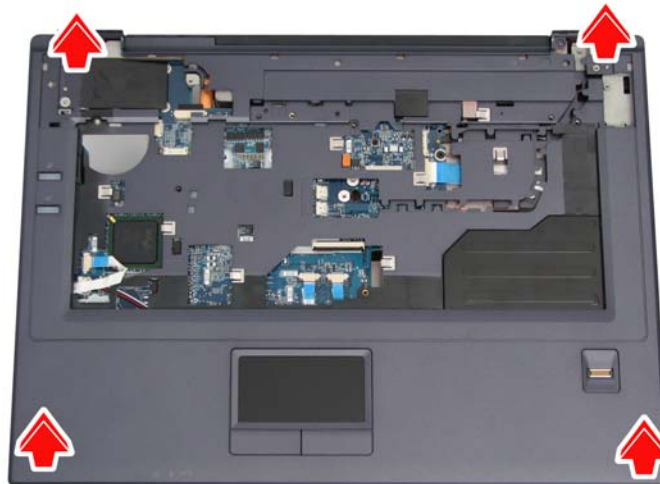
2. Remove the M2x3 screw and M2.5x8 screw securing the logic upper to the logic lower.



3. Turn the computer over again and disconnect the power USB board FFC, touchpad, and finger printer cables as shown.



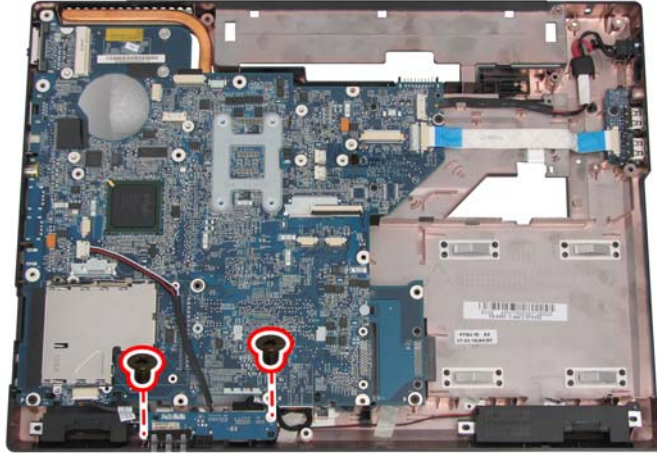
4. Lift off the logic upper.



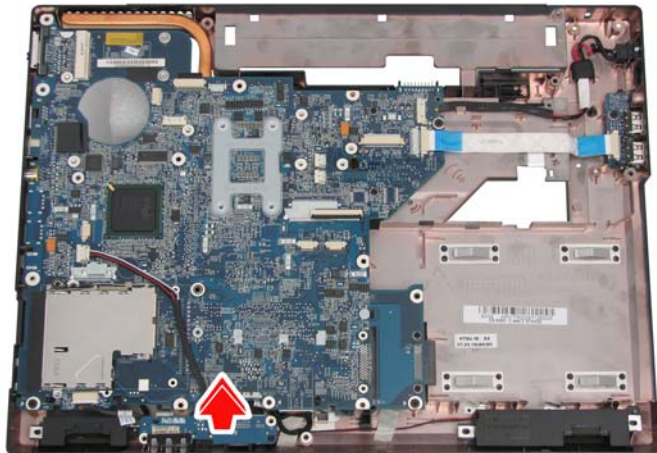
1.17 Removing the LED Board

To remove the front board, first remove the logic upper as described in the preceding sections. Then follow the steps below:

1. Remove the two M2.5x4 screws securing the LED board to the logic lower.



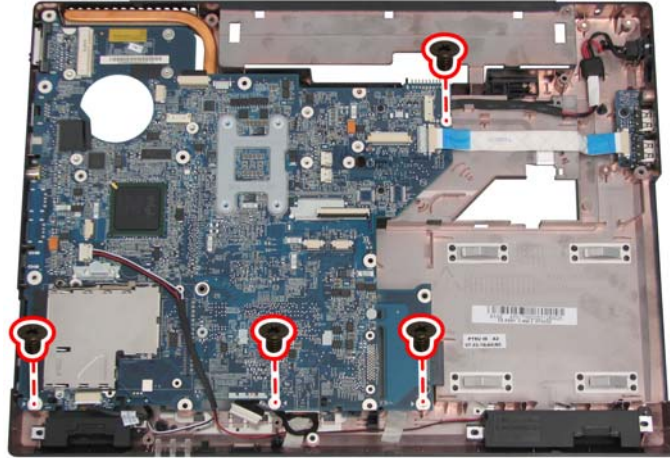
2. Remove the LED board.



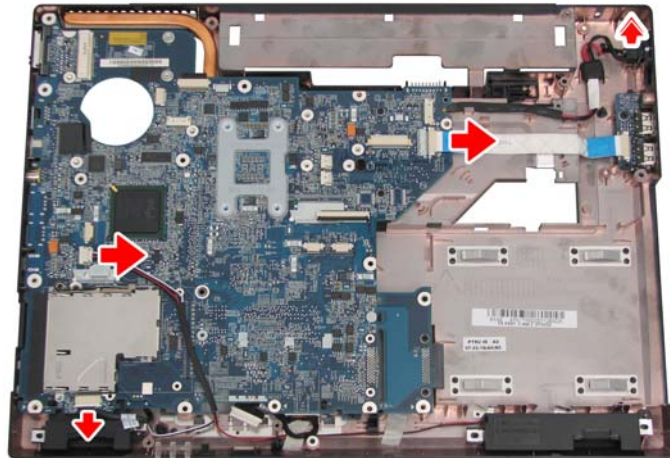
1.18 Removing the Motherboard

To remove the motherboard, first remove the logic upper, and LED board as described in the preceding sections. Then follow the steps below:

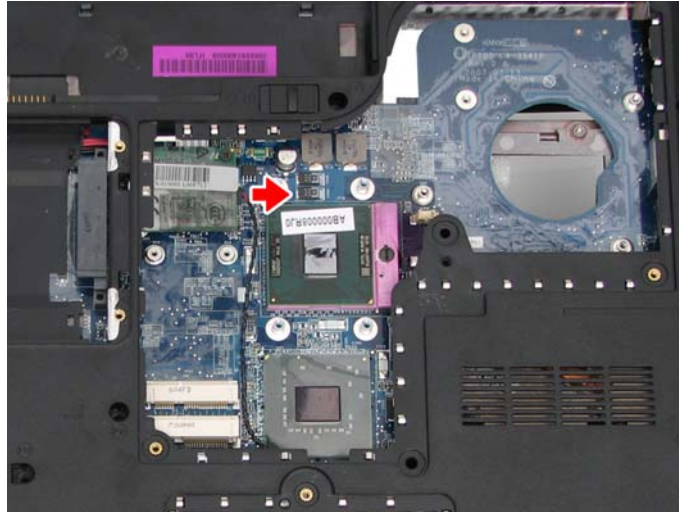
1. Remove the four M2.5x4 screws securing the motherboard to the logic lower.



2. Disconnect the USB board FFC, speaker and audio board cables. Remove the DC-IN socket from its housing and lift out the motherboard.



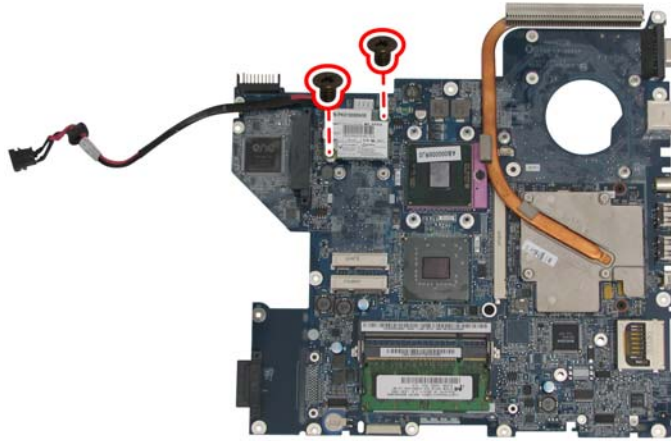
3. Turn over the laptop and disconnect the MDC card cable.



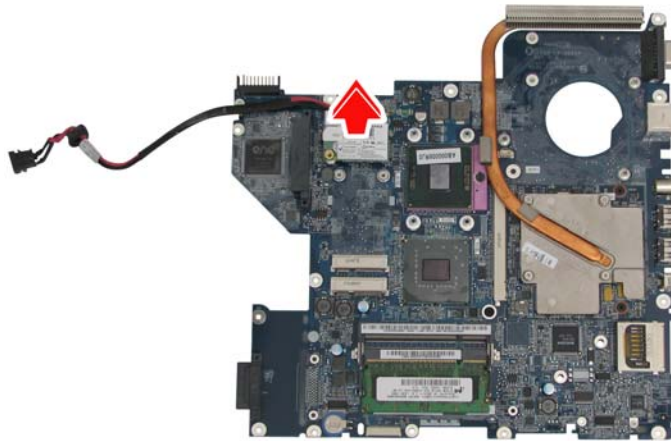
1.19 Removing the Modem Card

To remove the modem card, first remove the motherboard as described in the preceding sections. Then follow the steps below:

1. Remove the two M2x3 screws securing the modem card to the motherboard.



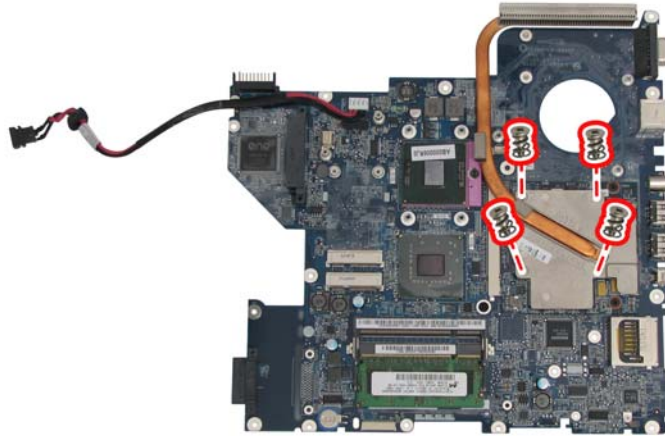
2. Remove the modem card.



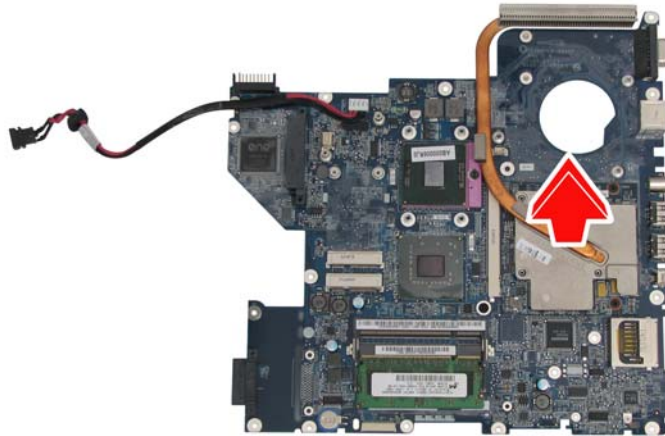
1.20 Removing the VGA Board

To remove the VGA board, first remove the motherboard as described in the preceding sections. Then follow the steps below:

1. Remove the four spring screws securing the VGA heat sink to the VGA board.



2. Remove the VGA heat sink.



3. Remove the two M2x3 screws securing the VGA board to the motherboard.



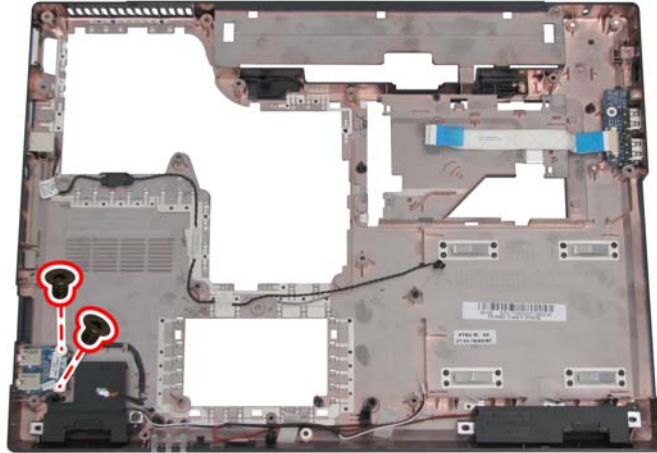
4. Remove the VGA board.



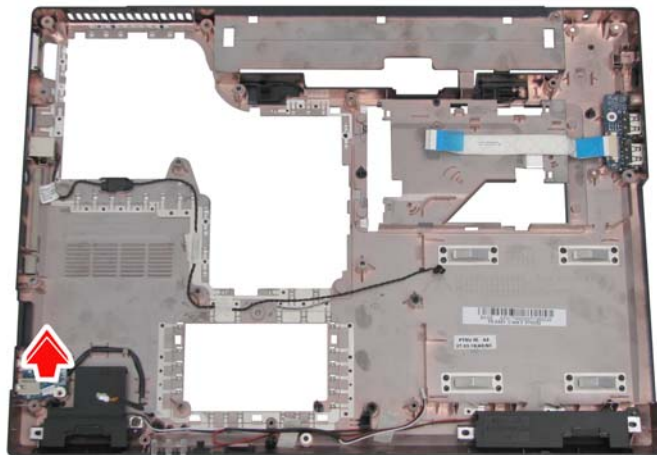
1.21 Removing the Audio Board

To remove the audio board, first remove the logic upper, LED board, and motherboard as described in the preceding sections. Then follow the steps below:

1. Remove the two M2.5x4 screws securing the audio board to the logic lower.



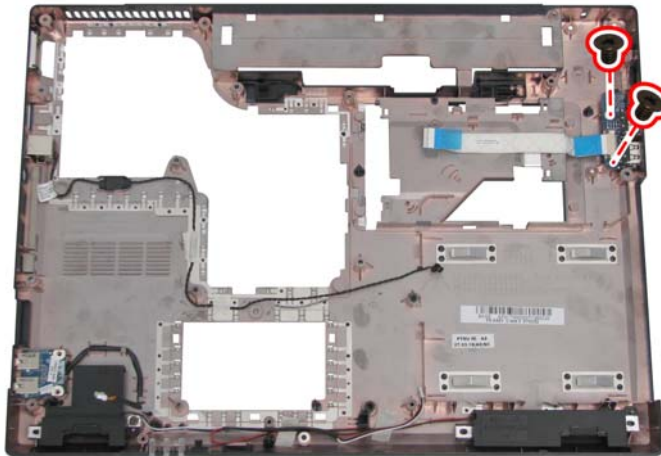
2. Remove the audio board.



1.22 Removing the USB Board

To remove the USB board, first remove the logic upper, LED board, and motherboard as described in the preceding sections. Then follow the steps below:

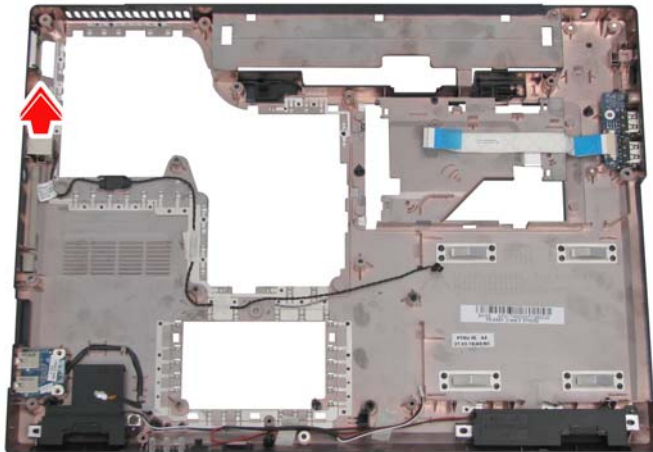
1. Remove the two M2.5x4 screws securing the USB board to the logic lower, and remove the USB board.



1.23 Removing the RJ11 Port

To remove the RJ11 port, first remove the logic upper, LED board, and motherboard as described in the preceding sections. Then follow the steps below:

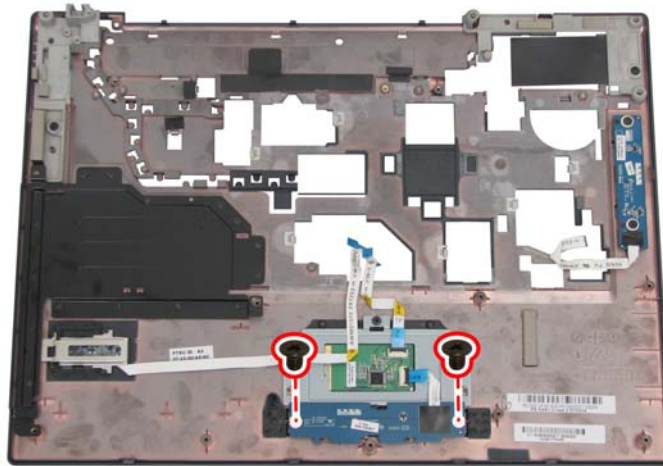
1. Lift the RJ11 port from its housing and detach the cable to remove it from the logic lower.



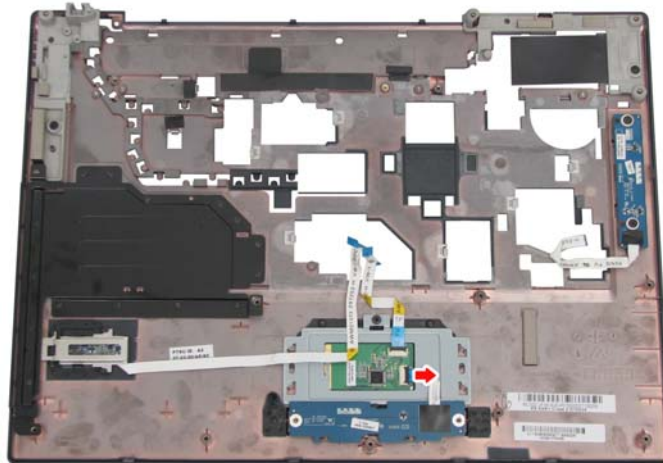
1.24 Removing the Touch Pad Button Board and Touch Pad

To remove the touch pad button board and touch pad, first remove the logic upper as described in the preceding sections. Then follow the steps below:

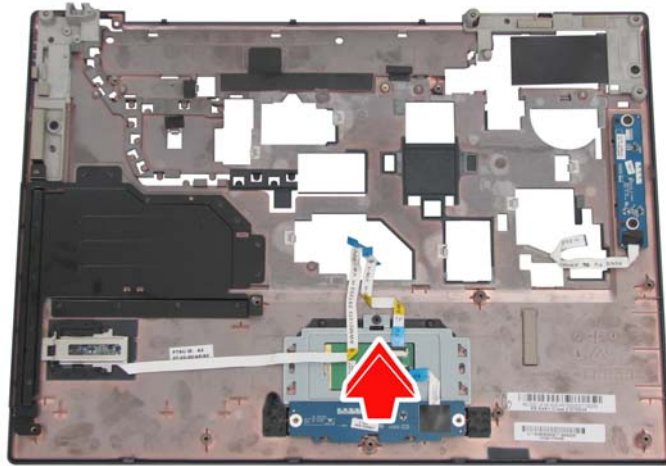
1. Remove the two M2.5x4 screws securing the touch pad button board to the rear side of the logic upper.



2. Disconnect the touch pad button board cable from the touch pad module.



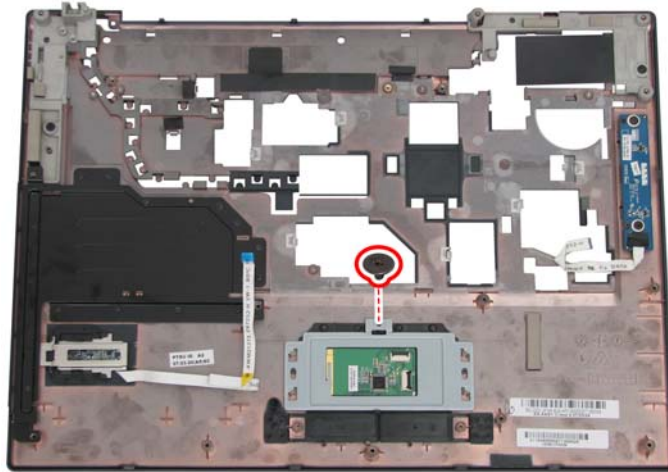
3. Remove the touch pad button board.



4. Disconnect the touch pad cable.



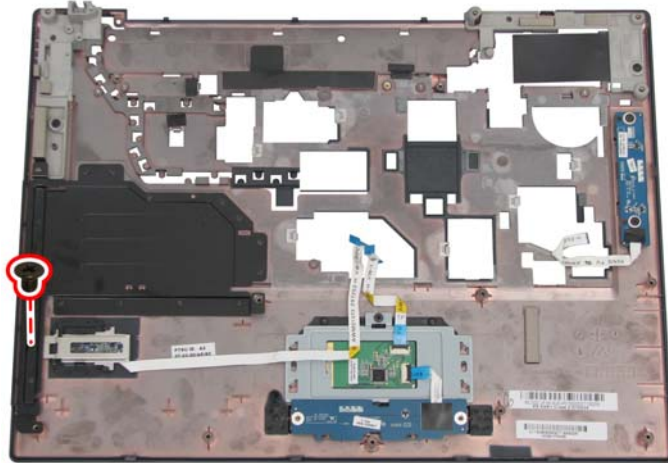
5. Remove the M2.5x4 screw securing the touch pad bracket to the logic upper. Lift off the bracket and remove the touch pad.



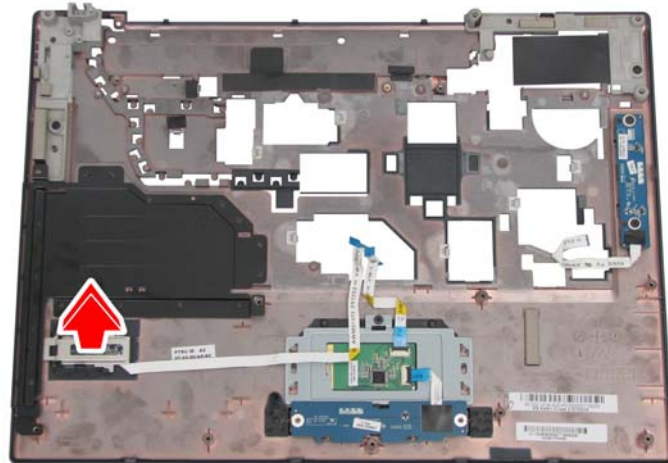
1.25 Removing the Fingerprinter Module

To remove the fingerprinter module, first remove the logic upper as described in the preceding sections. Then follow the steps below:

1. Remove the one M2x3 screw securing the fingerprinter module to the rear side of the logic upper.



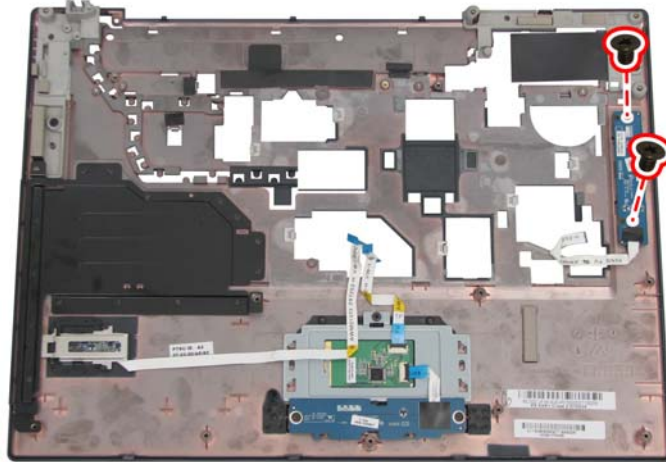
2. Remove the fingerprinter module.



1.26 Removing the Power USB Board

To remove the power USB board, first remove the logic upper as described in the preceding sections. Then follow the steps below:

1. Remove the two M2.5x4 screws securing the power USB board to the logic upper.



2. Remove the power USB board.

